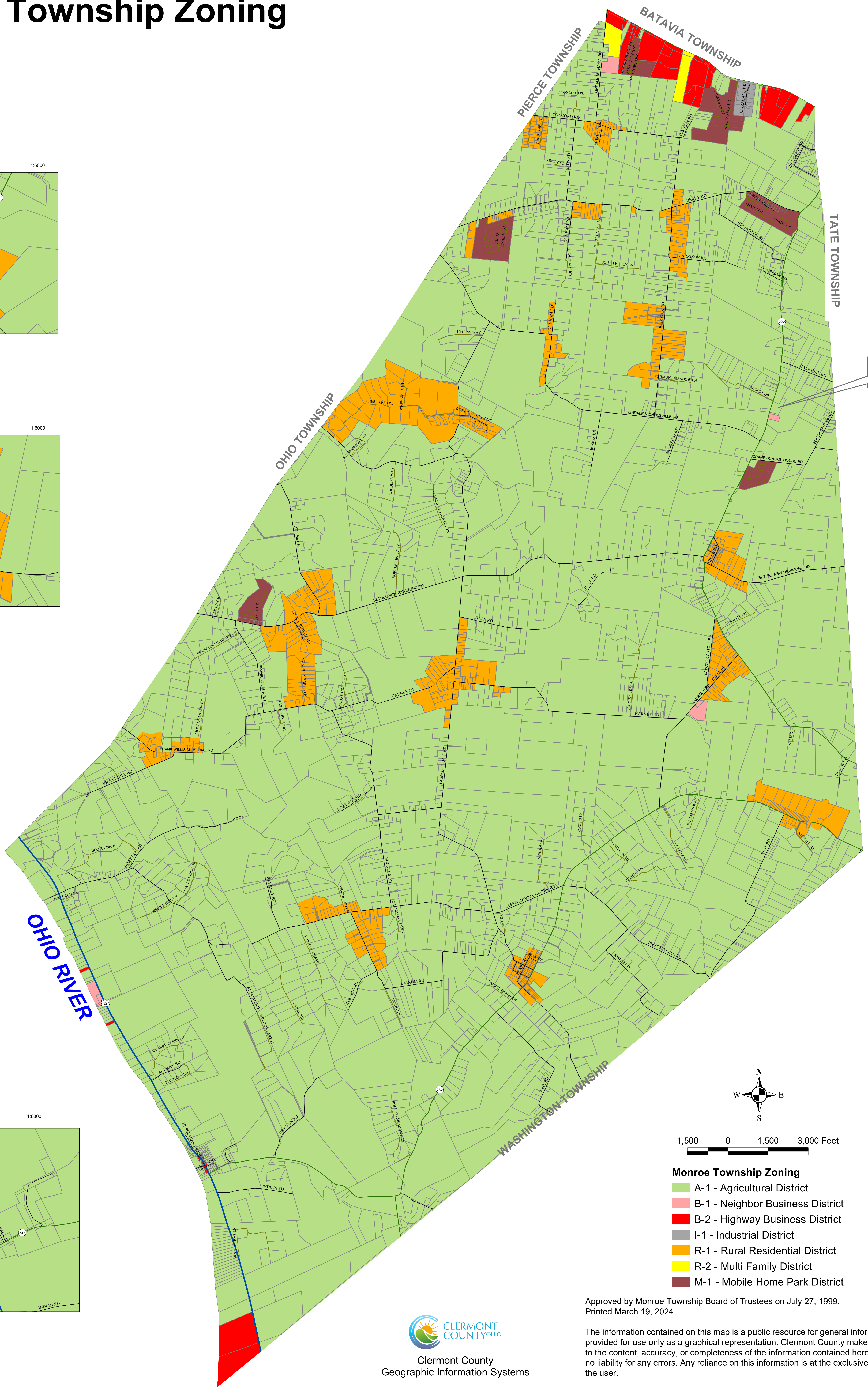
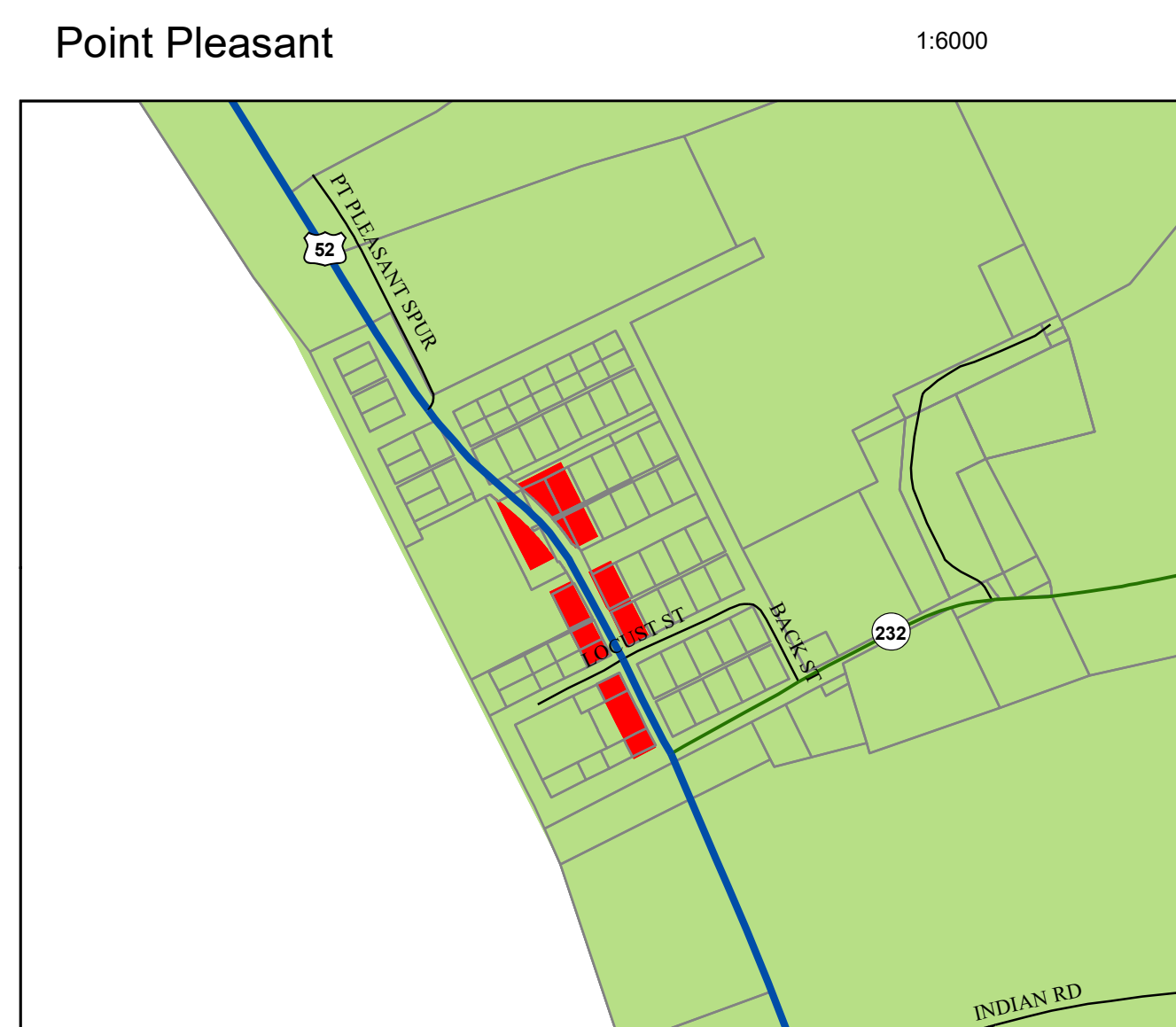
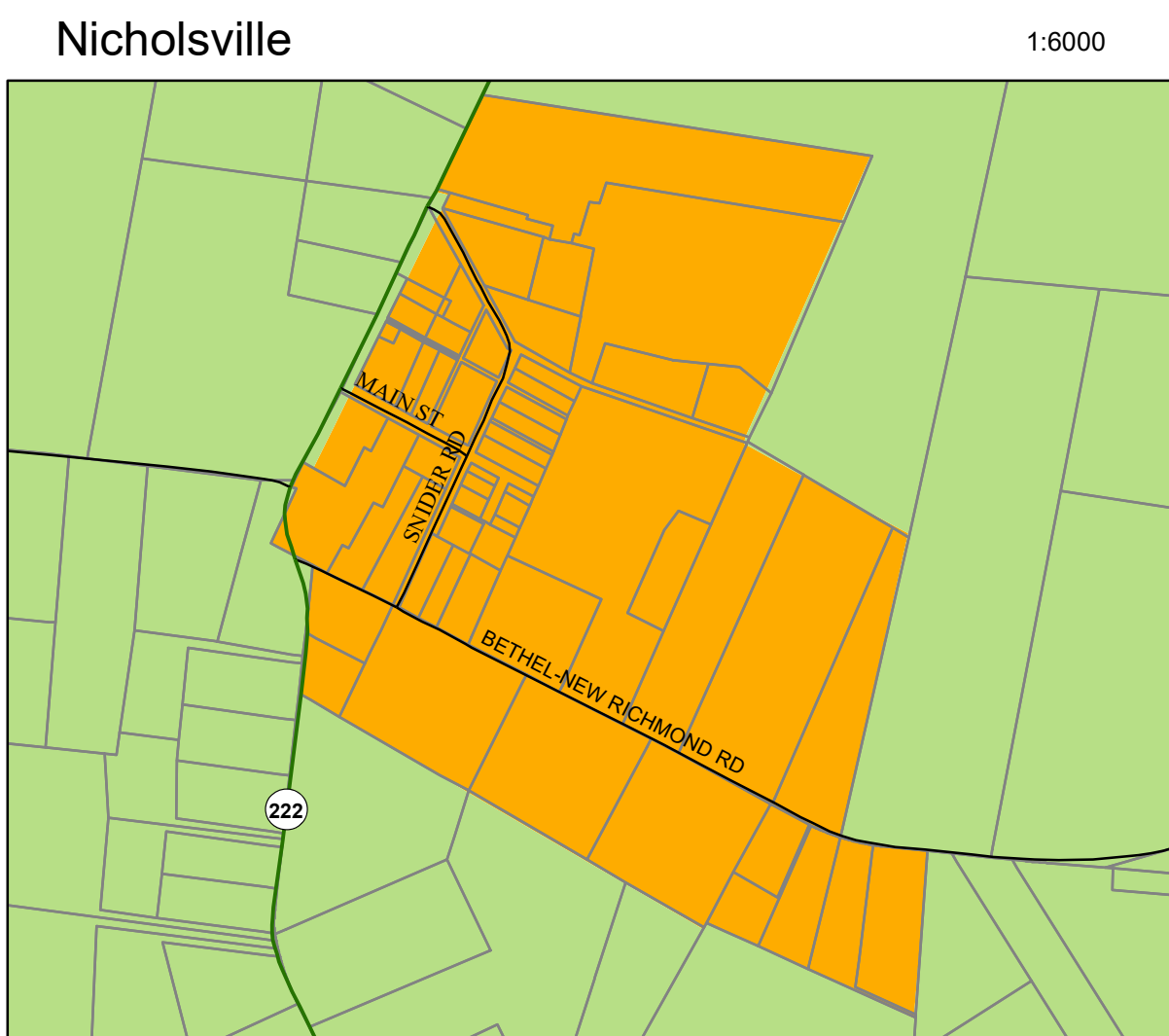
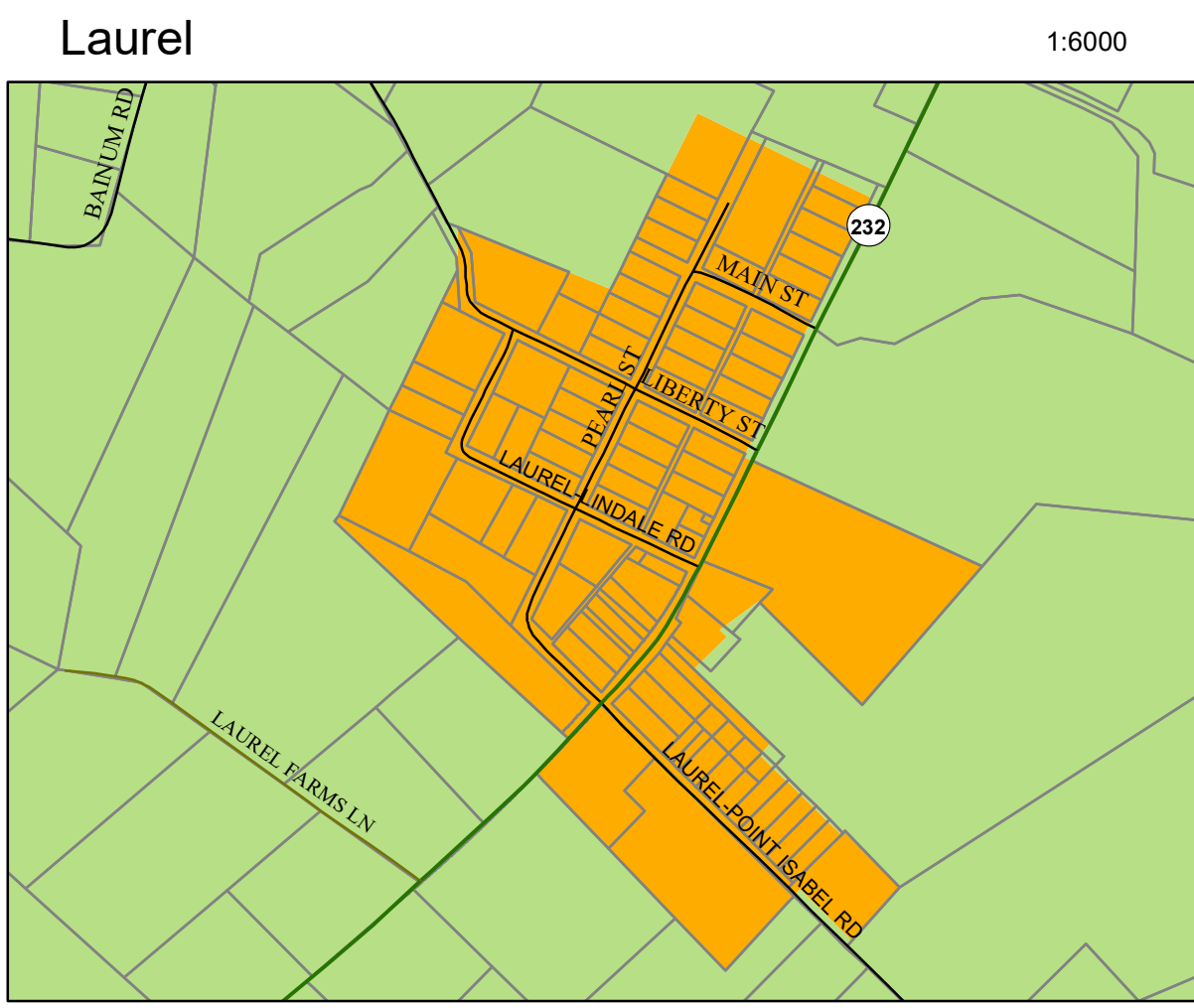
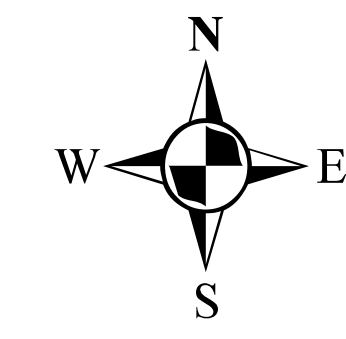


Monroe Township Zoning



Monroe Township Hall
2828 SR 222
Bethel, OH 45106
(513) 734-6482



1,500 0 1,500 3,000 Feet

- Monroe Township Zoning**
- A-1 - Agricultural District
 - B-1 - Neighbor Business District
 - B-2 - Highway Business District
 - I-1 - Industrial District
 - R-1 - Rural Residential District
 - R-2 - Multi Family District
 - M-1 - Mobile Home Park District

Approved by Monroe Township Board of Trustees on July 27, 1999.
Printed March 19, 2024.

The information contained on this map is a public resource for general information and is provided for use only as a graphical representation. Clermont County makes no warranty as to the content, accuracy, or completeness of the information contained herein and assumes no liability for any errors. Any reliance on this information is at the exclusive risk of the user.